



Liquid Level Control Switch

TYPE

ST-65AB

for dual application INSTRUCTIONS

1. INSTALLATION:

Mount switch securely on top or side wall of water tank. Using string attached, connect the 2 weights by positioning the lower weight at desirable level approximately half of total tank depth; and the upper weight at about 8/10 of tank depth. Then hang the weights onto the control lever of switch.

2. PUMPING WIRING:

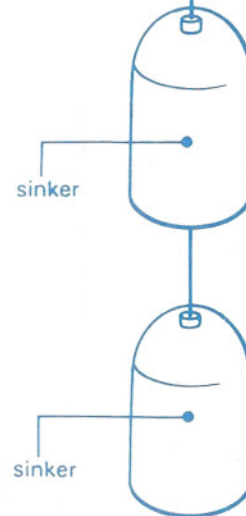
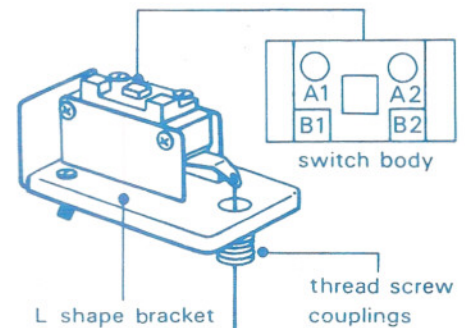
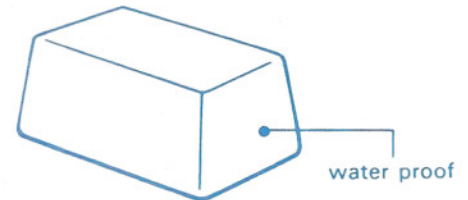
Connect the 2 wire leads to connectors A1 and A2 respectively for automatic controlling of electric motor. Switch cuts off power when liquid level comes up to the position of upper weight, and cut-in to drive motor when liquid goes down to the position of lower weight.

3. SUMP WIRING:

Interchange terminal leads from A1 and A2 to B1 and B2 respectively and secure connectors safely. Other positions remain unchanged as of step (2). Switch cuts off when liquid level goes down to the position of lower weight and vis-a-vis.

4. IMPORTANT:

- Rating: 220V 7.5A AC
- Rating: 110V 15A AC
- No. of Poles: Single pole double-throw
- Mechanical Life: 1 million snaps
- Control Range: 0.18 — 5 meters
- Tank Pressure: 1 atmosphere





Liquid Level Control Switch

Correct Install

